

PRODUCT

PANEL SAW

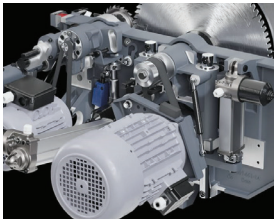


Product Specifications

- The panel saw offers a maximum cutting length of 3200 mm and width of 1250 mm, with a cutting thickness of up to 85 mm. It is equipped with a high-precision main saw blade (300 mm – 400 mm) operating at 4000 – 6000 RPM and a scoring saw blade (120 mm) running at 8000.
- Driven by a robust main motor and a scoring saw motor, the machine ensures smooth and powerful operation. It also includes a 100 mm dust port for efficient extraction, achieving a 80% dust collection rate.
- The machine includes an anodized aluminum sliding table, tilt adjustment from 0° to 45° And Automatic Scoring Up-Down.
- Optional features like an Digital Readout, Sliding Start-Stop, And Support Roller.



45 angel digital display



Heavy saw unit



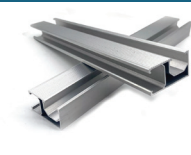
Slider Push Button



Manual Panel Saw – 375 mm European slider

Product Details

A **PANEL SAW MACHINE** is an essential piece of equipment in woodworking and furniture manufacturing, designed to accurately cut large panels of wood, plywood, MDF, and other sheet materials into smaller, precise sizes. Typically used in work-shops and industrial settings, the panel saw is known for its efficiency, versatility, and precision. It features a robust frame, a sliding table, and a powerful motor that drives the cutting blade, allowing for smooth and straight cuts. The machine is equipped with a main saw blade and a scoring blade, which work together to ensure clean and chip-free edges, particularly on laminated materials. Advanced models often include digital controls and adjustable cutting angles, enhancing accuracy and ease of operation.



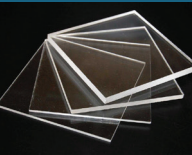
Alluminium Alloy



Solid Wood Board



Multy Layer Board



Plexiglass Board



Density Board



0000000

SPECIFICATION	N375E	N375S	N375U
Sliding Table	3200 x 37 MM European	3200 x 37 MM European	3200 x 37 MM European
Main motor	5HP	5HP/7.5HP	5HP/7.5HP
Scorer motor	1.5HP	1.5HP/2HP	1.5HP/2HP
Max depth of cut	115MM	115MM	115MM
Main saw dia	400 MM MAX	400 MM MAX	400 MM MAX
Scorer dia	120MM	120 MM	120 MM
Main saw inner dia	30 MM	30 MM	30 MM
Scorer inner dia	20 MM	20 MM	20 MM
Scoring lateral movement	MAN +- 3MM	MAN +- 3MM	MAN +- 3MM
Scoring up-down	Auto	Auto	Auto
Main saw up-down	Motorised	Motorised	Motorised
Back refence max cut	1280 mm	1280 mm	1280 mm
Front refence max cut	1800 mm (3300 mm extended)	1800 mm (3300 mm extended)	1800 mm (3300 mm extended)
Tilting movement	0° to 45° Manual (digital)	0° to 45° Manual (digital)	0° to 45° Manual (digital)
Back refence locking	Manual	Pneumatic	Pneumatic
Back refence	Scale	Digital	Digital
Back support roller	Extra	Included	Included
Front refence digital readout	Extra	Extra	Extra
On/off switch on sliding table	Optional	Included	Included
Overall dimensions	3300x3200x950 mm	3300x3200x950 mm	3300 x 3200 x 950 mm
Packing dimensions	1050x3200x1050 mm	1050x3200x1050 mm	1050 x 3200 x 1050 mm

PRODUCT

COLD PRESS



Product Details

A **COLD PRESS MACHINE** is essential in woodworking and furniture manufacturing, used primarily for bonding veneers, laminates, and other materials to substrates like wood or MDF. It operates without heat, applying uniform hydraulic or pneumatic pressure to ensure a strong and even bond across large surfaces. This process preserves the original properties of the materials, making it ideal for delicate applications where heat could cause damage. Cold press machines in India are available in various sizes and configurations, offering different pressure capacities to meet diverse production needs. With a robust steel frame, precise controls, and consistent performance, these machines ensure high-quality finishes and durable bonds in manufactured products.

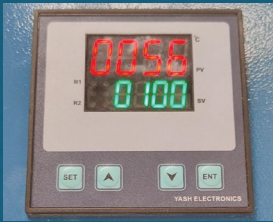
SPECIFICATION	TWINFLOW 50	QUADFLOW 100	HEXFLOW 150
Cylinder count	2	4	6
Cylinder rod (d)	80	80	80
Cylinder stroke	1000 MM	1000 MM	1000 MM
Platen size l x w	2530 X 1300 MM	2530 X 1300 MM	2530 X 1300 MM
Top structure	400 X 6 MM	500 X 6 MM	500 X 8 MM
Capacity	50 tonne	100 tonne	150 tonne
Controlling	MAN/AUTO	MAN/AUTO	MAN/AUTO
Overall dimensions	2950 X 1320 X 2900MM	2950 X 1320 X 2900MM	2950 X 1320 X 2900MM
Packing dimensions	2950 X 1320 X 2250MM	2950 X 1320 X 2250MM	2950 X 1320 X 2250MM
Approx weight	2200 kg	2800 kg	3200 kg

Product Specifications

- Heavy duty platen designed to take maximum compression loads.
- Pressing platen is synchronized on rack & pinion for smooth up-down movement with acentric rollers.



4 side rack Pinon Working platen insure uniform pressure increase life of cylinder



Digital auto cut off



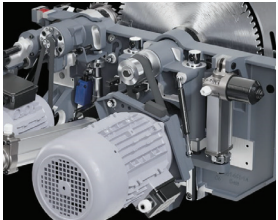
PRODUCT

AUTO PANEL SAW



Product Specifications

- Heavy Duty Precision sliding table with bearing developed with advanced technology with multi chamber system for maximum rigidity of the double roller carriage
- Sturdily built heavy duty m/c. for precise burr free cutting
- Made in India with best service support & very economical spares



Heavy Duty Saw Unit



435 MM European slider



HMI one touch control system

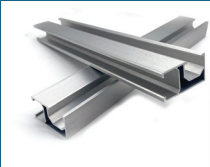


Slider Push Button

Product Details

An **AUTO PANEL SAW MACHINE** is a highly efficient and precise tool used in woodworking and furniture manufacturing. It is designed to automate the cutting process, allowing for the accurate sizing of large panels, such as plywood, MDF, and particleboard. Equipped with a powerful motor, a durable main saw blade, and a scoring blade, it ensures clean, chip-free cuts, even on laminated surfaces. In India, these machines are available with advanced digital controls for setting cutting dimensions and angles, making them ideal for high-volume production environments. The robust construction and reliable performance make it a crucial asset in modern manufacturing.

SPECIFICATION	N435X
Sliding Table	3200 x 435 mm european
Main motor	7.5HP/10HP
Scorer motor	2HP
Max depth of cut	115MM
Main saw dia	400 MM MAX
Scorer dia	120MM
Main saw inner dia	30 MM
Scorer inner dia	20 MM
Scoring lateral movement	MAN +- 3MM
Scoring up-down	Auto
Main saw up-down	Motorised
Back refence max cut	1280 mm
Front refence max cut	1800 mm (3300 mm extnded)
Cross cut fence	Front refence with auto scale adjustment
Tilting movement	0° to 45° Automatic
Back refence	Automatic
Back support roller	Included
Front refence digital readout	Included
On/off switch on sliding table	Included
Interface	Touch panel with plc based controlling system (delta)
Overall dimensions	3300 x 3200 x 950 mm
Packing dimensions	1150 x 3200 x 1050 mm
Approx weight	1250 to 1300 kg



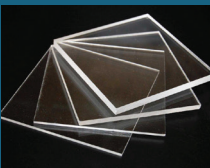
Alluminium Alloy



Solid Wood Board



Multy Layer Board



Plexiglass Board



Density Board



0000000

PRODUCT

CNC ROUTER



Product Specifications

- Heavy duty body designed to take maximum Material loads.
- Equipped with Helical Rack and Gear system to achieve speed and accuracy.
- Z axis equipped with high accuracy Ball screw for a minute detailed carving.



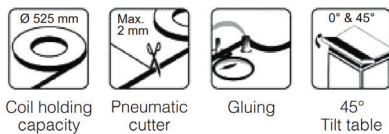
Product Details

A **CNC ROUTER** is a versatile and precise machine widely used in woodworking, Stone-carving, and signage industries. It is designed to cut, carve, and engrave various materials like wood, plastic, aluminum, and composite materials with exceptional accuracy. The machine is controlled by computer software, allowing for intricate designs and complex shapes to be produced consistently. Equipped with a powerful spindle, the CNC router can operate at high speeds, making it suitable for both large-scale production and custom projects. In India, CNC routers are available in different sizes and configurations, tailored to meet specific industrial needs. Its reliability, precision, and efficiency make it an indispensable tool for manufacturers seeking to enhance productivity and quality.

SPECIFICATION	STEPMASTER 84	EASYSERVO+ 84	SERVOELITE 84
Xyz working area	2500 x 1300 x 200mm	2500 x 1300 x 200mm	2500 x 1300 x 200 mm
Spindle motor	3.5KW/4.5KW/6KW	3.5KW/4.5KW/6KW	3.5KW/4.5KW/6KW
X and y axis motor	86KG/CM STEPPER	86KG/CM easy servo with digital driver	750 W servo with digital driver
Z axis motor	86KG/CM stepper	86KG/CM easy servo	1 KW servo with break
Axis driver	Belt and pulley	Belt and pulley	Gearbox
X and y movement	Rack and pinion	Rack and pinion	Rack and pinion
Z axis movement	Ball screw	Ball screw	Ball screw
Rack dimensions	17MM	17MM	24MM
Ball screw dimensions	20MM	20MM	25MM
Lm guide	20MM	20MM	20MM
Vacuum bed	Optional	Optional	Optional
Operating system	Rich auto/weihong/nc studio	Rich auto/weihong/nc studio	Rich auto/weihong/nc studio
Overall dimensions	3100 x 2000 x 1850MM	3100 x 2000 x 1850MM	3100 x 2000 x 1850MM
Approx weight	950 to 1100 kg		

PRODUCT

MANUAL EDGEBANDER



Product Specifications

- This machine ensures to do edge-banding any size and shape with optimum bonding.
- Coming with a big gluepot so customers work interrupted.
- Equipped with Speed control, temperature control and foot – micro switch.



Digital Temperature Meter



Digital AMP Meter



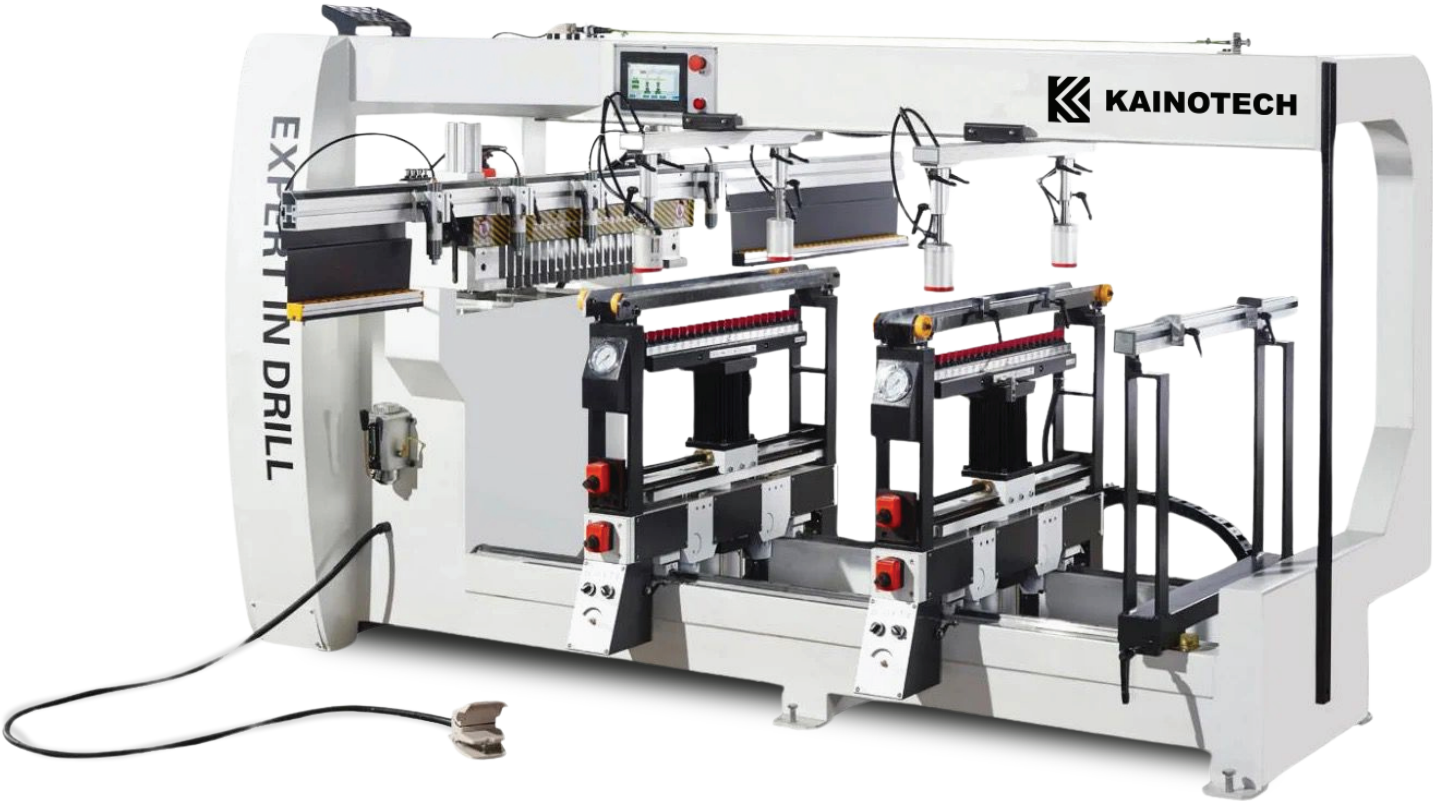
Product Details

A **MANUAL EDGEBANDER** is a practical and cost-effective machine used in woodworking for applying edge banding materials to the edges of panels, such as plywood, MDF, or particleboard. It is ideal for small to medium-scale production where precision and quality are crucial. The machine allows operators to manually feed and apply edge strips made of PVC, creating a smooth, finished edge. Equipped with features like adjustable temperature control, high capacity glue pot, the manual edgebander ensures a strong bond and clean finish. In India, these machines are valued for their durability, ease of use, and ability to deliver professional results in customized furniture and cabinetry production.

SPECIFICATION	CURVE EDGE 1.0	CURVE EDGE 2.0
Thickness of work piece	6-50mm	6-50mm
Edgeband thickness	0.4-2MM	0.4-2MM
Gluepot capacity	2.5KG	2.5kg
Heater power	3kw	3kw
Tape feeding and cutting	Pneumatic	Pneumatic
Feed controlling	Man/auto	Man/auto
Tape cutting control	Micro/foot	Micro/foot
Motor power	0.5hp	0.5hp
Variable speed	Available	Available
Roller support	-	Included
45o tilting table	-	Included
Overall dimensions	1220 x 1200 x 780	1220 x 1270 x 780
Tape coil max dia	550 mm	550 mm
Approx weight	250 to 300 kg	

PRODUCT

MULTI BORING



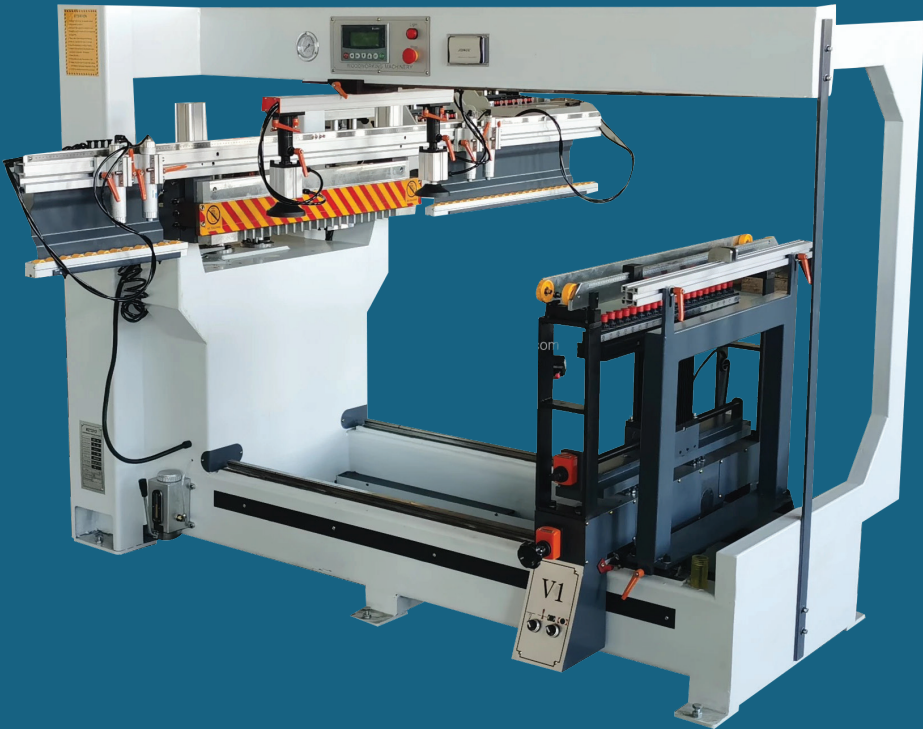
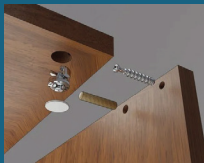
Product Details

A **MULTI-BORING MACHINE** is an essential tool in the woodworking and furniture manufacturing industries, designed for drilling multiple holes simultaneously with high precision. It is particularly useful for tasks such as creating dowel joints, shelf pin holes, and other repetitive drilling operations in wood, MDF, or particleboard. The machine features multiple spindles that can be adjusted to different configurations, allowing for flexibility in drilling patterns. In the Indian market, multi-boring machines are available with advanced features like pneumatic clamping, digital depth control, and easy adjustment systems, enhancing efficiency and accuracy. Robustly built for durability, these machines are ideal for high-volume production, ensuring consistent results and significantly reducing manual labor.

Product Specifications

- Build with heavy duty chasis to ensure vibration free process and enable higher accuracy.
- Working on Linear Guide to achieve smooth Head movement and Pin point accuracy.
- Long body ensures you to work freely and time efficiently with a less setting time.

SPECIFICATION	MINIFIX - 242	MINIFIX - 363
Thickness of work piece	12-70mm	12-70mm
Max workpiece size	1800 X 640	2400 X 640
Spindle head	Two (One horizontal & one vertical)	Three (one horizontal & two vertical)
Total drill spindles	42	63
Collet size	14-40	14-40
Drill bit shank	10mm	10mm
Maximum drill diameter	35mm	35mm
Maximum drilling depth	Up to 50mm	Up to 50mm
Working air pressure	5 to 8 kg/cm2	5 to 8 kg/cm2
Total power	3kw/4hp	4.5kw/6hp
Overall dimensions	2950 x 3050 x 1650mm	3550 x 3050 x 1650mm
Approx weight	900 kg	1150 kg





Scan For Website

About Company

Kainotech is a rapidly growing manufacturing company specializing in high-quality woodworking machinery. Aligned with the "Make in India" initiative, our company is dedicated to designing and producing advanced machinery that empowers local craftsmen and businesses. We focus on innovation, precision, and durability, ensuring that our machinery not only meets but exceeds industry standards. Each piece of equipment is crafted with the utmost attention to detail, reflecting our commitment to delivering products that enhance productivity and quality in woodworking.



Meet Founder

Chirag Raval, the driving force behind **Kainotech**, brings 15 years of industry experience to the helm. With a deep understanding of woodworking machinery and a commitment to innovation, he has led the company to quickly become a trusted name in the industry.



Quality

Kainotech Machines are built and tested to high quality standards, with a focus on durability, functionality, and stability.



Service

Our goal is to contact customers within 24 hours of the first support request. We strive to have the request resolved within 72 hours.



Spare

Spare-parts are crucial in any machinery. We maintain stock of all standard spare parts for immediate replacement.



Technical Support

We provide technical support via call and video call. Our expert support is guaranteed anytime. Provides you with fast, efficient solutions.



Training

Our training support is a critical aspect of ensuring that customers can effectively operate and maintain their machinery. It can include a variety of activities, from providing comprehensive manuals and online resources to offering training sessions.

OUR VISION

Our vision is to be a global leader in wood-working machinery, delivering innovative and reliable solutions. We aim to drive growth in the industry while supporting the "Make in India" initiative with a focus on quality and sustainability.

OUR MISSION

Design and manufacture high-quality wood-working machinery that enhances productivity and craftsmanship. We are committed to providing reliable, innovative solutions while ensuring exceptional customer service and timely delivery.

OUR VALUES

- Quality
- Innovation
- Customer Focus
- Integrity



PRODUCT

DUST COLLECTOR



Product Details

A **dust collector machine** is an essential industrial device designed to improve air quality by capturing and filtering dust, debris, and other pollutants generated during manufacturing processes. It operates through a powerful suction system that draws in contaminated air, passing it through a series of filters that trap the particles, allowing clean air to be released back into the environment. This helps maintain a safe, clean workspace, protects machinery, and ensures compliance with environmental regulations. Dust collectors are widely used in industries such as woodworking, metalworking, pharmaceuticals, and food processing.

MODEL	FAN (HP)	VOLTAGE	AIRFLOW (CMH)	SUCTION INLET	FILTERS	FILTER SIZE (DIAXDEPTH)	WASTE BAGS	SIZE
PDA - 3200	3	230V / 440V	2300	4" x 3"	2	18 x 39	2	50" x 24" x 92"
PDA - 5200	5	440V	3000	4" X 4"	2	18 x 39	2	50" x 25" x 92"
PDA - 7200	7.5	440V	4500	4" X 5"	2	18 x 48	2	55" x 2.5" x 110"

PRODUCT

MEMBRANE VACUUM PRESS



SPECIFICATION	HEATSYNC - B	HEATSYNC - H
Thickness of work piece	12-70MM	12-70mm
Worktable size	2550 X 1300 MM	2550 X 1300 MM
Vacuum pressure	-0.1 Mpa	-0.1 Mpa
Total power	28 HP	28 HP
Vacuum pump	3 HP	3 HP
Working trolley	1 + 1 (Optional)	1 + 1 (Optional)
Heating element	Bulb	Heater
Overall dimensions	6870 X 1850 X 1450 MM	6870 X 1850 X 1450 MM
Working mode	MAN/AUTO	MAN/AUTO
Overall dimensions with optional trolley	10470 X 1850 X 1450 MM	10470 X 1850 X 1450 MM
Approx weight	1100 KG	1150 KG

Product Details

A **membrane vacuum press** is an advanced industrial machine used for laminating, forming, and veneering materials such as wood, MDF, or composites. It operates by applying uniform pressure using a flexible membrane and a vacuum system, ensuring that the material conforms tightly to the shape of the mold or surface being laminated. This process results in high-quality finishes, perfect for creating smooth, durable surfaces in cabinetry, furniture manufacturing, and other applications requiring precision and aesthetic appeal. The machine enhances productivity and guarantees consistency in both small and large-scale production.

Product Specifications

- Build with heavy duty chasis to ensure vibration free process and enable higher accuracy.
- Working on Linear Guide to achieve smooth Head movement and Pin point accuracy.
- Long body ensures you to work freely and time efficiently with a less setting time.



Digital Timer



Digital Temperature Meter



PRODUCT

AUTOMATIC EDGE BENDER

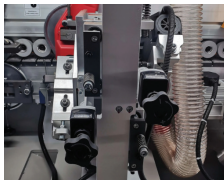


SPECIFICATION	000
Model	NOVA60
Panel Length	MIN. 140MM
Panel Width	MIN. 50MM
Panel Thickness	10-60 mm
Edge Thickness	0.4 - 3MM
Feeding Speed	16M / Min
Working Pressure	0.7 Mpa
Net Weight	1050Kg
Motor Power	7.5KW
Overall Size	3030*750*12



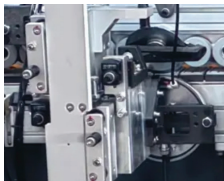
Product Details

An **Automatic edge bender** is a high-efficiency machine used in woodworking and furniture manufacturing to apply edge banding to the exposed edges of materials like plywood, MDF, or particleboard. This machine automatically glues, trims, and smoothens edge banding materials, such as PVC, ABS, or veneer, onto the panels, creating a seamless and durable finish. Its precise operation enhances both the appearance and strength of furniture while reducing labor costs and time. Automatic edge benders are essential for producing professional-quality cabinetry, doors, and office furniture with clean, polished edges.



Fine Trimming

The R-knife trims off the excess sealing strips to form rounded corners, making the trim more beautiful, and the heavy-duty KDT type unit is highly stable in structure.



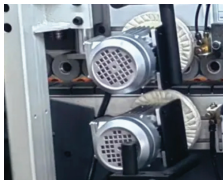
Scraping& Buffing

Super carbide R-knife scrapes the fine lines of the sealing strip to make it round and smooth. The heavy-duty KDT type unit has a high structural stability.



Gluing

The glue pot glue shaft seal is stable without glue seepage and has a large glue loading capacity. And with Teflon coating, quick-change structure.



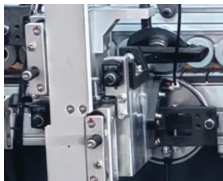
Buffing

The cloth wheels quickly polish the edges of the sealing strip for a more rounded and beautiful finish.



Cleaning device

Cleaning the residual glue of the board, sealing effect is more perfect.



End Cutting

The regulator with backflow function is adopted, together with the self-designed air piping, which makes the stability performance remarkable.

